

# RAM | BUILDING CONSULTANCY

---

# TESTING SERVICES



Dynamic Leak Investigation



Electronic Leak Detection



Rainwater Outlet Testing



Endoscopic Surveys



Drone Survey



Electrical Capacitance Test



CWCT Testing



De-watering Vacuum



Thermographic Imaging



Moisture Mapping



Water Analysis

# CONSULTANCY SERVICES



Roof & Building Condition Surveys



Structural Surveys



Feasibility Studies



Specification Writing



Project Management



CDM Principle Designer



Contract Administration



Listed Building Consent



Planning Applications



Asset Management Planning



Space Planning



Architectural Design

GET IN TOUCH TO ARRANGE YOUR **FREE CONSULTATION** TODAY

📍 0844 335 1822  
📍 [enquiries@rambc.co.uk](mailto:enquiries@rambc.co.uk)

**RAM** | BUILDING CONSULTANCY

# CASE STUDIES

## ST MARY'S HOSPITAL

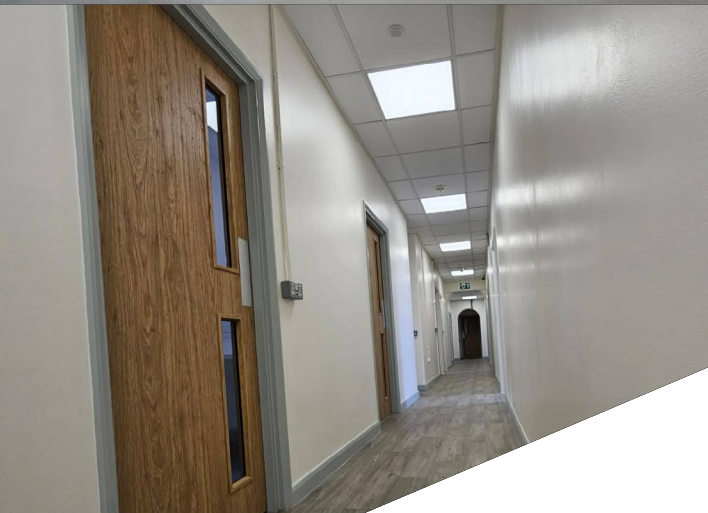
### Fleming Centre

### Office Reurbishment

**Location:** London

#### Project Overview:

Imperial College Healthcare NHS Trust appointed RAM Building Consultancy to deliver comprehensive office refurbishments across the Clarence Wing 4th Floor, Salton House 5th & 8th Floor and Acrow East & West Buildings.



The project entailed refurbishing and reconfiguring, run down, disused (except for storage) rooms into fully functional spaces for NHS staff.

- Over 30 rooms refurbished across four hospital zones.
- Installation of over 40 new fire doors (FD30 and FD60 rated) for improved compartmentation.
- Upgraded floor finishes, suspended ceilings, energy-efficient LED lighting, and decoration in infection-control finishes.
- Integration of specialist packages (fire alarm, asbestos removal, and M&E) seamlessly into the refurbishment programme.
- Detailed planning and phased working to align with hospital operational requirements.

GET IN TOUCH TO ARRANGE YOUR **FREE CONSULTATION** TODAY

📍 0844 335 1822  
📧 [enquiries@rambc.co.uk](mailto:enquiries@rambc.co.uk)

**RAM** | BUILDING  
CONSULTANCY

# CASE STUDIES

## HEALTHCARE

### St. Mary's Hospital - Clarence Wing

#### Roof & Façade Refurbishment

**Value:** £2.5m

**Location:** London

#### Project Details:

St Mary's Hospital – Clarence Wing is a Grade II Listed Building, recognised for its "exuberant and eclectic late-Victorian design, combining motifs from Northern and Italian Renaissance architecture with English Baroque motifs."

RAM acted as Project Managers, Contract Administrators, and Principal Designers overseeing the work.

#### Results:

Through effective stakeholder coordination and meticulous project management, RAM ensured the successful restoration of Clarence Wing while maintaining hospital operations with minimal disruption. The work preserved the building's historic integrity, improved structural resilience, and enhanced safety compliance.



### Charing Cross Hospital - Plant Room & CAT 3 Lab

#### Site Survey

**Location:** London

#### Project Details:

RAM were instructed to carry out an emergency site survey to a CAT 3 Lab on the 4th floor at Charing Cross Hospital, which was impacted by water ingress.

#### Results:

Following our investigations, we were able to identify several areas in the plant room above, where valves, pipework and floor membrane had failed.

Recommendations for remedial works to the plant room flooring, calorifiers and leaking pipework were given, with works subsequently carried out. RAM's remedial recommendations were followed, and no further leaks have been reported.

GET IN TOUCH TO ARRANGE YOUR **FREE CONSULTATION** TODAY

📍 0844 335 1822  
📍 [enquiries@rambc.co.uk](mailto:enquiries@rambc.co.uk)

**RAM** | BUILDING  
CONSULTANCY



# CASE STUDIES

## HEALTHCARE

### Lincoln County Hospital

#### Roof Condition Survey

**Location:** Lincoln

**Project Details:**

RAM were instructed to carry out a site wide Roof Condition Survey, to assess the condition of the various flat & pitched roofs and provide a guide to their estimated life expectancy.

**Results:**

The roofs were graded by condition and urgency of remedial action or replacement, and recommendations made as to the scope of these works. We also provided a 5-year project plan, complete with detailed budgets.



### Bracknell Healthspace

#### Roof Condition Survey

**Location:** London

**Project Details:**

RAM were engaged by Royal Berkshire Hospital to carry out a full visual inspection of over 4000m<sup>2</sup> of flat and pitched roofing at Bracknell Healthspace. Access was achieved using a MEWP to allow safe and efficient surveying with minimal disruption to the building's daily operation.

**Results:**

RAM completed an in-depth survey, grading each area by condition and urgency of remedial action or replacement. We provided a detailed report with a clear roadmap for remedial action and long-term capital planning, ensuring the longevity of these critical healthcare buildings.

GET IN TOUCH TO ARRANGE YOUR **FREE CONSULTATION** TODAY

📍 0844 335 1822  
📍 [enquiries@rambc.co.uk](mailto:enquiries@rambc.co.uk)

**RAM** | BUILDING  
CONSULTANCY